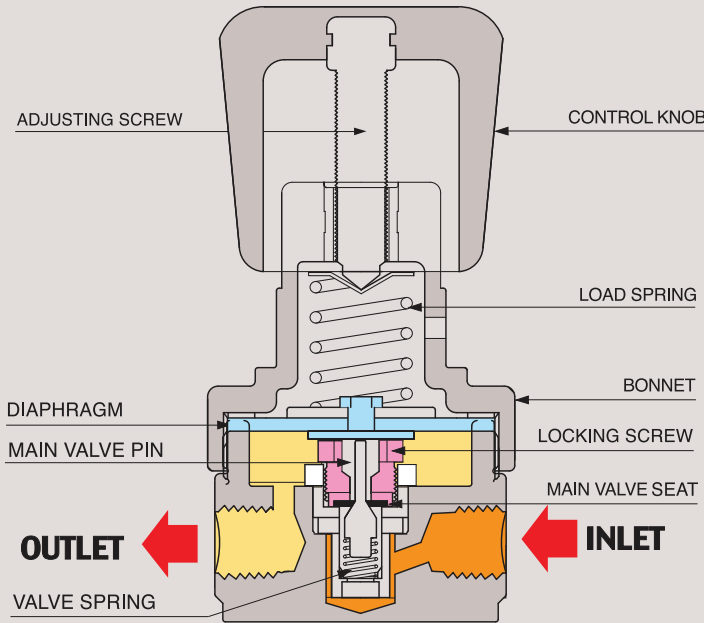


# DR60 SERIES

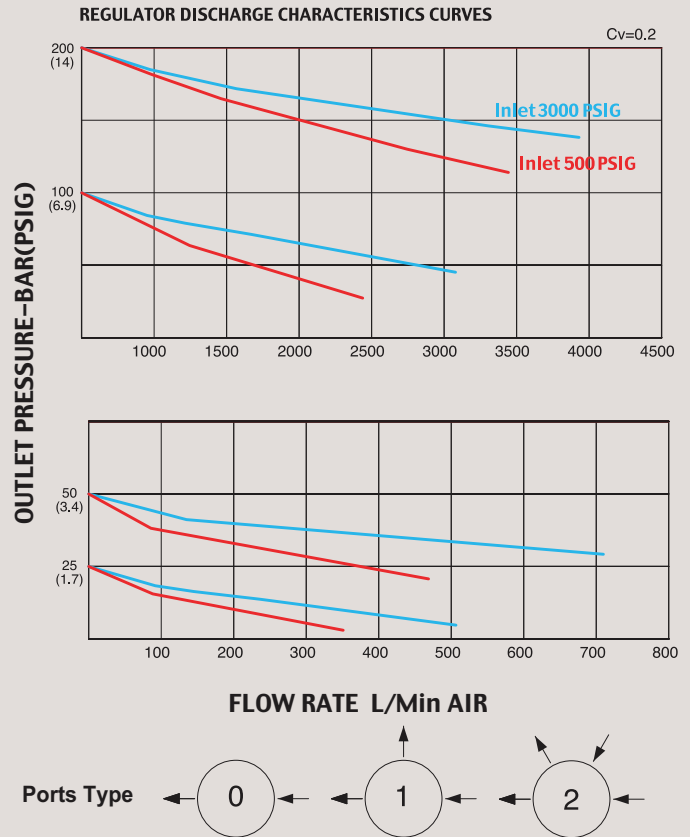
Single Stage Low Pressure Regulators



### FUNCTIONAL SCHEMATIC



### FLOW CHART



### Single Stage Low Pressure NPT type (1/4")

DR60시리즈는 배관 및 산업용 가스를 사용하기에 가장 적합하고 경제적인 모델입니다.

- 1/4" NPT 타입의 경제적 범용 모델로서 특히, 선택하는 압력계(Gauge)가 기본으로 조립하여 출고되는 제품입니다.
- 본체는 니켈 도금 브라스(Brass), 내부 부품은 Stainless Steel 또는 Brass로 구성되며 Valve Seat는 Teflon, 다이어프램은 특수고무 재질을 사용하여 경제성과 함께 Co2 가스 등을 사용하여도 내구성과 안전성이 뛰어난 제품입니다.
- 입구 압력은 최대 3000psi(210bar)이고 출구압력은 모델에 따라 5psi(0.3bar)에서 최대 200psi (14bar)까지 사용하기에 적합한 제품이며, 용도에 따라 2-ports, 3-ports 또는 4-ports를 선택할 수 있습니다.

### Specifications

In/Outlet Port Size	1/4" FNPT / Gauge port: 1/4" NPT
Body	Nickel Plated Forged Brass
Bonnet	Zinc (Zn) Casting Nickel Plated
Diaphragm	Particular of Synthetic Rubber (NBR)
Main Valve	Stainless Steel 316L
Valve Spring	Stainless Steel
Valve Seat	Teflon
Maximum Inlet Pressure	3,000psig (210bar) / 600psig (42bar)
Outlet Pressure Range	25(1.7bar), 50(3.4bar), 100(7bar), 200psig (14bar)
Design Proof Pressure	150% of maximum rated
Leakage	to $2 \times 10^{-6}$ atmcc/sec Helium available
Operating Temperature	-40°C to +70°C (-40°F to +160°F) (Standard)
Flow Capacity	$C_v = 0.2$
Other Options	Inlet CGA etc.
Weight	Approx. 1.0kgs

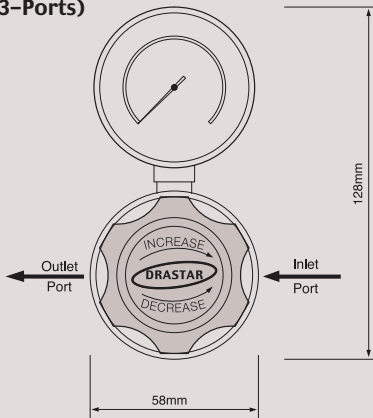
# INSTALLATION DIMENSIONS

METRIC EQUIVALENTS ARE IN PARENTHESES

■ GAUGE PORT OPTIONS

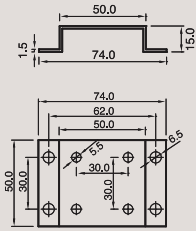
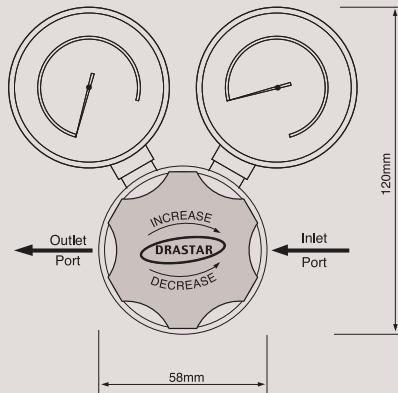
MODEL DR60-A025-1

(3-Ports)

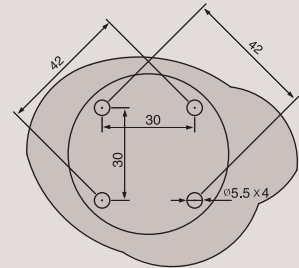


MODEL DR60-A025-2

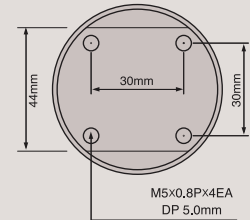
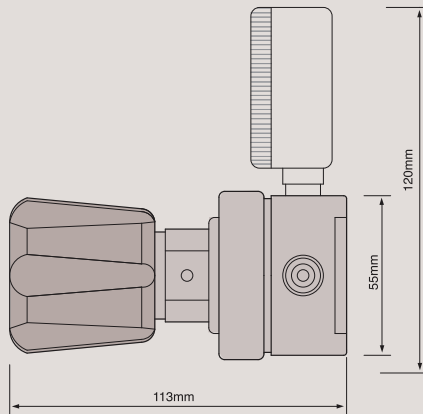
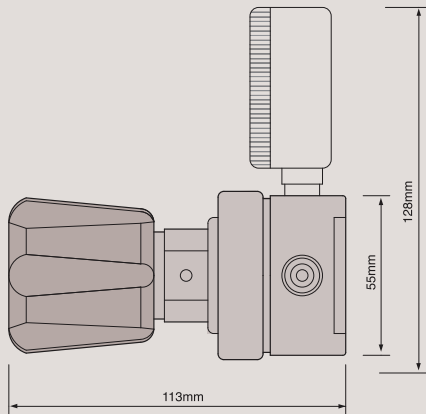
(4-Ports)



Wall Mounting Bracket Option



BRACKET CUT-OUTS



DR60 Series is a 1/4" NPT type single-stage pressure reducing regulator being widely used for general plumbing and industrial gases. Made of nickel plated brass for body and stainless steel or brass for internal parts, Teflon valve seat, and diaphragm of special rubber, DR60 series is an economical model with durability and safety as well.

### Features & Applications

- 1/4" NPT type regulator
- Suitable for the general plumbing and industrial control fields
- Inlet pressures are 3000psi(210bar) or 600psi(42bar) and outlet pressures are 25psig (1.7bar), 50psig(3.5bar), 100psig(7bar), 200psig (14bar)
- Design proof pressure: 150% of maximum rated

※ DRASTAR' s all pressure regulators are assembled, cleaned, inspected, and packed in clean-room equipped with clean bench, helium detector, particle counter, ultrasonic cleaner, ultrapure water system, vacuum packaging machine, etc. through oxygen cleaning procedure in compliance with process and regulations indicated in CGA 4.1. and or ASTM G-93 and are free of any grease or oils.

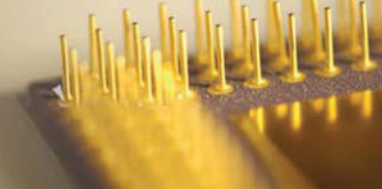
### ORDERING INFORMATION

**DR60 - A 025 - 1**

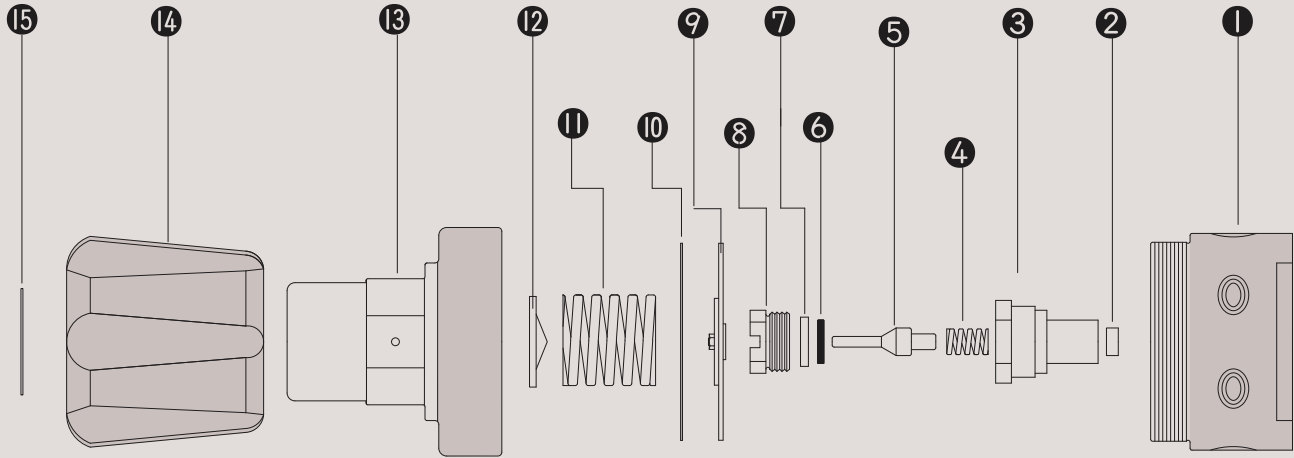
BASIS SERIES NUMBER	MAX. INLET PRESSURE	OUTLET PRESSURE RANGES	INLET OUTLET PORTS SIZE
DR60 Series	A = 3000psi(210bar) B = 600psi(42bar)	025 = 0-25psig (0-1.7bar) 050 = 0-50psig (0-3.5bar) 100 = 0-100psig (0-7bar) 200 = 0-200psig (0-14bar)	0 = 2-Ports 1 = 3-Ports 2 = 4-Ports

# DR60

SERIES



## DR60 SERIES PART LIST



### STANDARD MODEL SERIES

Item No.	Description	Part No.	Model Application
01	Body	DR60-02-02	02-02 Brass
02	Cartridge Filter	DR60-62-01	All Model Same
03	Cartridge	DR60-66-01	All Model Same
04	Valve Spring	DR60-04-02	04-01 STS 304
05	Main Valve	DR60-06-01	06-01 STS 316L
06	Valve Seat	DR60-10-01	10-01 PFA
07	Valve Seat Cartridge	DR60-08-01	All Model Same
08	Locking Screw	DR60-12-03	All Model Same
09	Diaphragm Assembly	DR60-16-04	16-04 NBR / 16-05 EPDM
10	Gasket	DR60-16-00	All Model Same
11	Load Spring	DR60-38-01	38-01 25psi / 38-02 50psi / 38-03 100psi / 38-04 200psi
12	Pivot	DR60-40-01	All Model Same
13	Bonnet	DR60-44-03	All Model Same
14	Control Knob	DR60-50-03	All Model Same
15	Name Plate	DR60-56-00	All Model Same

