

2/2 way solenoid valve normally closed or normally open

type 32, stainless steel body (AIS03)
direct operated, DN 1,5 – 3,0mm, G1/8



SPECIFICATION	
general	
type of construction	2/2-poppet valve, normally closed NC or normally open NO, coil 360° rotatable
operator	solenoid
ports	G1/8
ambient temperature	-20°C to +50°C, higher allowed ambient temperatures on request
fluid temperature	dependent on sealing material and coil
viscosity	max. 37 mm ² /s (cst) or 5° E
material	Body and tube: stainless steel 1.4305 (AISI 303) Inner parts : stainless steel 1.4105IL (AISI 430 FR) sealing: see type selection
mounting	2 threads M3
installation	in any position, preferable vertical fixed solenoid coil
unit of supply	without connector
electrical data	
voltage	DC voltage or AC voltage
standard voltage	24V DC, 24V AC, 230V AC
special voltage on request	6V-200V DC, 12V-240V, 50Hz or 60Hz
acceptable voltage tolerance	+/- 10%
power consumption	see specifications at solenoid coils
coil type	temperature class F (155°C), winding class H (180°C)
acceptable voltage tolerance	+/- 10%
protection class	IP65 according DIN EN 60529 (DIN 40050) with correctly mounted connector
pneumatic – hydraulic	
flow medium	all liquids and gases, which don't attack the used material
max. body housing pressure	PN 40 (bar)
response time	12 – 20ms
special equipment on request	coil type with cable, explosionproof coil, manual override coils for temperature class H (180°C), other sealing materials

2/2 way solenoid valve normally closed or normally open

type 32, stainless steel body (AIS03)

direct operated, DN 1,5 – 3,0mm, G1/8

type 32A, normally closed								
type * (order-nr.)	NW DN (mm)	maximum differential pressure in bar **						kv-value (m ³ /h)
		coil C1DA		coil C2DA		coil C3AA		
		~ (50Hz)	= (DC)	~ (50Hz)	= (DC)	~ (50Hz)	= (DC)	
32A – 1.15–.C...	1,5	20	10	25	16	30	25	0,082
32A – 1.20–.C...	2,0	10	2	16	8	25	15	0,133
32A – 1.25–.C...	2,5	5	0,6	10	3,5	14	8	0,195
32A – 1.30–.C...	3,0	3,5	-	6	1,5	9	3	0,250
32A – 1.35–.C...	3,5							
32A – 1.40–.C...	4,0	1	-	2	0,3	3,5	1,2	0,340

* Type designation (order-nr.) must be completed with sealing material, short circuit ring, coil and supply voltage. (see order code)

** At DC voltage all pressure specifications apply to a fluid temperature up to 80 °C. At higher fluid temperatures, the maximum differential pressure will be reduced by 0,5% / °C. All specifications refer to fluids with a maximum viscosity of 37 cst. (5°E). Higher viscosities cause extended response time and need a special specification of the valve

sealing material	Code	fluid temperature	applicable for	standard voltage	Code
NBR (Perbunan)	B	max. 80 °C	neutral gases and liquids	24V = DC	02400
EPDM	E	max. 130 °C	hot water, steam, not for oil and grease	24V ~ (50Hz)	02450
FPM	V	max. 130 °C	oil, petrol, oxygen, acids and bases	230V ~ (50Hz)	23050

coil power consumption at 20 °C, protection class, interface					
coil type	inrush power ~ (50Hz) VA	rated power ~ (50Hz) VA	power = (DC) (W)	protection class with/without connector	interface
C1DA	9	5	3,0	IP65 / IP00	Connector (DIN 43650) type B industrial standard
C2DA	13	10	6,5	IP65 / IP00	Connector (DIN 43650) type B industrial standard
C3AA	17	13	6,3	IP65 / IP00	Connector DIN EN 175301 – 803 (DIN 43650), type A

ORDER CODE	32 B - 1 V 20 G Z - A C3AA 23050									
	type	function	ports	seal material	nominal size seat	throw off spring	stroke compensation spring	short circuit ring	coil type	supply voltage
	type 32	A = normally closed, B = normally open	1 = G1/8	B = NBR (Perbunan), E = EPDM, V = FPM	15 = 1,5 mm, 20 = 2,0 mm, 25 = 2,5 mm, 30 = 3,0 mm	only normally open – see specific type (B, F, G)	Z = only normally open	A = copper short circuit ring, X = without short circuit ring	see specifications of the particular coil	always 5-digit, see code of standard voltage

2/2 way solenoid valve normally closed or normally open

type 32, stainless steel body (AIS03)

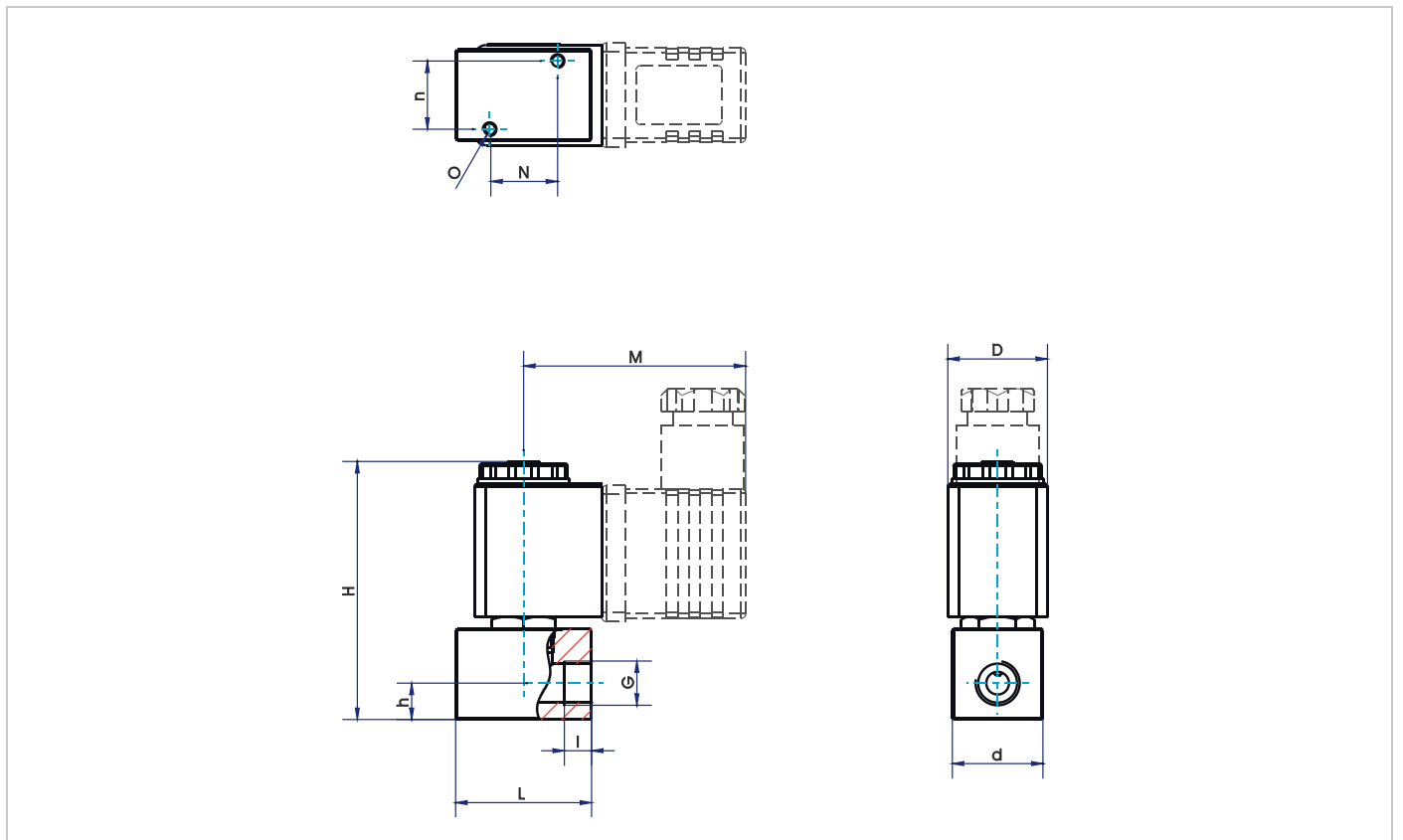
direct operated, DN 1,5 – 3,0mm, G1/8

type 32B, normally open								
type * (order-nr.)	NW DN (mm)	maximum differential pressure in bar **						kv-value (m ³ /h)
		coil C1DA		coil C2DA		coil C3AA		
		~ (50Hz)	= (DC)	~ (50Hz)	= (DC)	~ (50Hz)	= (DC)	
32B-1.15BZ-.C1DA	1,5	5	5					0,082
32B-1.20BZ-.C1DA	2,0	3,5	3,5					0,133
32B-1.25BZ-.C1DA	2,5	2,0	2,0					0,195
32B-1.30BZ-.C1DA	3,0	2,5	-		1,5			0,250
32B-1.15FZ-.C2DA	1,5			10	10			0,082
32B-1.20FZ-.C2DA	2,0			5,5	5,5			0,133
32B-1.25FZ-.C2DA	2,5			3,5	3,5			0,195
32B-1.30FZ-.C2DA	3,0			4,0	-			0,250
32B-1.15GZ-.C3AA	1,5					13	13	0,082
32B-1.20GZ-.C3AA	2,0					8	8	0,133
32B-1.25GZ-.C3AA	2,5					5	5	0,195
32B-1.30GZ-.C3AA	3,0					5	-	0,250

* Type designation (order-nr.) must be completed with sealing material, short circuit ring, coil and supply voltage. (see order code)

** All specifications refer to fluids with a maximum viscosity of 37 cst. (5°E).

Higher viscosities cause extended response time and need a special specification of the valve.



Dimension table for type 32 in mm, weight approx. in g														
with coil	N	n	O	M	H		h	G	I	L	D	d	weight (g)	
					type 32A	type 32B							type 32A	type 32B
C1DA	15	15	M3	49	57	58.5	8	G 1/8	6	30	22	20	142	142
C2DA					57	58.5							142	142
C3AA					53.5								197	197