

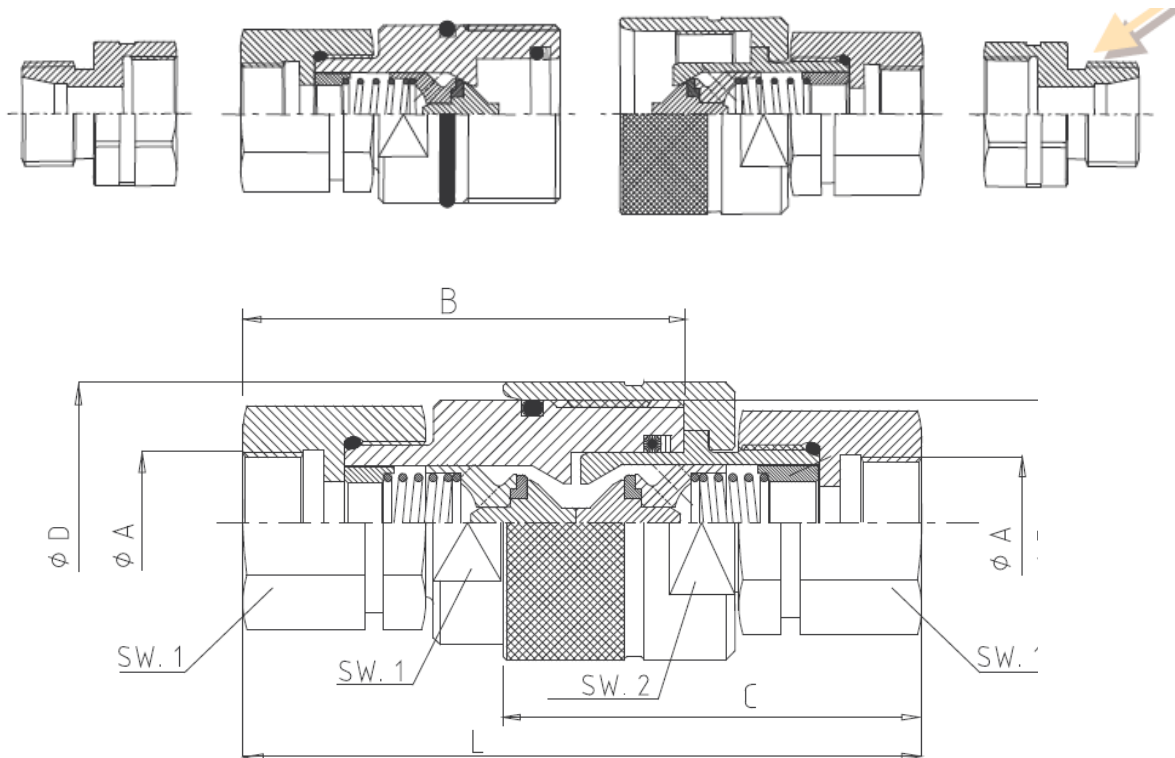
SC450 - Screw Couplings Series

up to 450Bar, 316 Stainless steel

- Standard Threads: BSP/NPT /other threads on request
- Connection under pressure by rotating the screwed sleeve
- Viton Seals or else on request
- PTFE Antiextrusion BK rings
- Burst pressure: 2,5 times working pressure



On request adaptors with different thread size male or female end or connection for compression fitting



| ØA-xx inch | B mm. | C mm. | D mm. | L mm. | SW 1 mm. | SW 2 mm. | E mm. | S mm. ² | WP Bar | M Kg. |
|---------------|----------|----------|----------|----------|-------------|-------------|----------|-----------------------|-----------|----------|
| 1/4"-06 | 59 | 58 | 30 | 92 | 19 | 27 | M24x2 | 22.5 | 450 | 0.22 |
| 3/8"-09 | 64.5 | 62 | 34 | 100 | 22/24 | 30 | M28x2 | 40.5 | 400 | 0.34 |
| 1/2"-13 | 67 | 63 | 42 | 102 | 30 | 38 | M36x2 | 79 | 400 | 0.60 |
| 3/4"-19 | 82 | 75 | 48 | 136 | 36 | 41 | M42x2 | 169 | 250 | 0.98 |
| 1"-25 | 95 | 78.5 | 55 | 138 | 41 | 50 | M48x3 | 224 | 250 | 1.30 |
| 1" 1/2-40 | 116 | 107 | 70 | 187 | 60 | 65 | M70x3 | 522 | 200 | 4.20 |